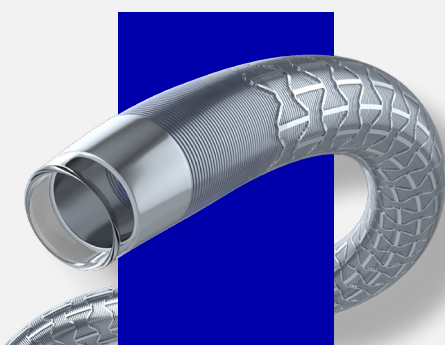




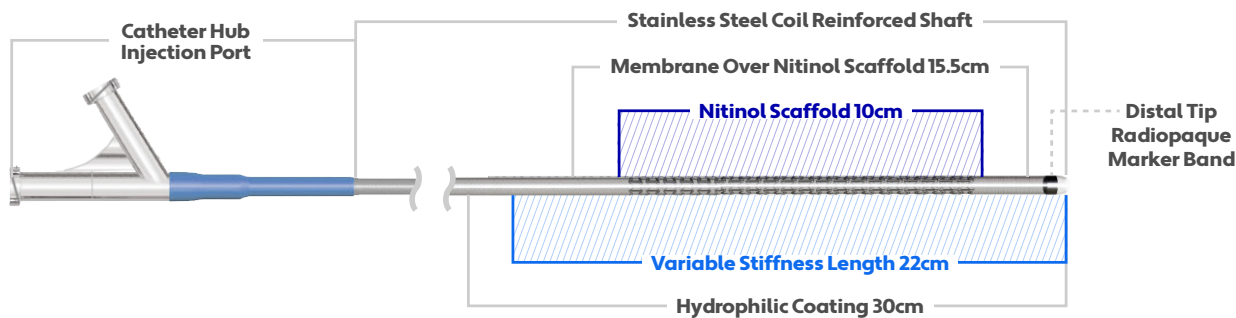
I am Armadillo.

I'm a new sort of catheter for a transradial approach. My radial-access system is elegantly tailored to the demands of accessing neurovasculature through the radial pathway. Plus, I'm optimized with two modes for seamless adaptation.



On the path to radial-access solutions, I'm leading the way.

The radial access approach is revolutionizing what's possible in neurovascular procedures—and I'm a front-line partner for caregivers propelling the profession forward. With my dual-mode capabilities and slick construction, I'm a solid option for the patient and a flexible one for the physician.



Tip Shape Straight	Outer Diameter (OD) 0.095"	Guidewire Compatibility 0.035" - 0.038"
------------------------------	--------------------------------------	---

0.072" ID

My 0.072-inch internal diameter enables procedural flexibility.

105cm

My length and SelectFlex technology mean I'm a game-changer when it comes to trackability and support.

7 French

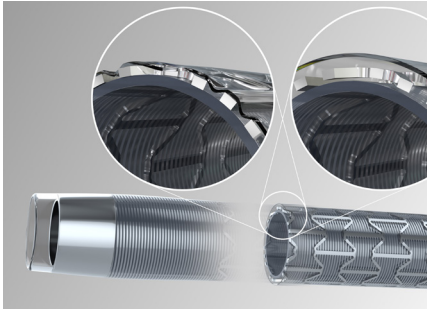
My 0.095-inch OD allows for compatibility with a 7 French system.

Accessories

- Mode Control Syringe
- Peel-Away Introducer
- Luer-Activated Valve
- Dilator

Here's how I deliver.

I'm optimized with two distinct operational modes—tracking mode and support mode—for seamless adaptation during a clinical case. Plus, my proprietary SelectFlex technology means I enable control, trackability, support, and access in one powerful solution. In short, I'm a critical step forward in serving the most complex radial interventions.



HOW I'M DIFFERENT

I'm nimble but solid.

When it comes to radial access, a slim profile is key—but so is superior support. That's where I come in. With my kink-resistant construction and SelectFlex variable stiffness technology, I can navigate even the most delicate tortuosity, providing a tremendously stable platform.

Attributes:

- Dual-mode technology with tracking and support modes
- On-demand physician control

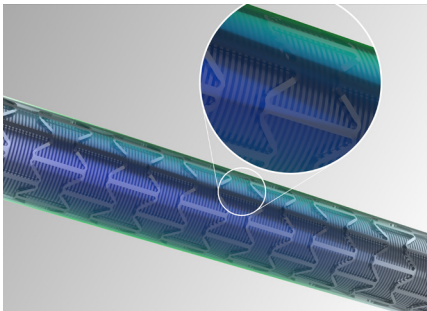
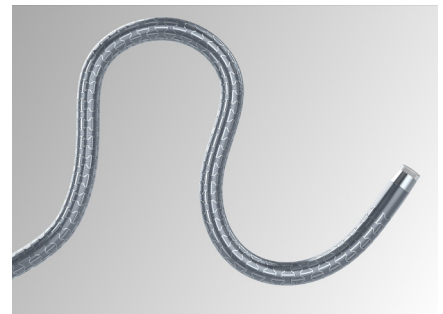
HOW I'M DIFFERENT

I'm comfortable in tight corners.

The pathway to radial-access success is a long and winding one. But I navigate acute bends with strength that outstrips my size and agility in the slimmest spots. How do I do it? With seamless transitions, a powerful coil design, and invaluable length.

Attributes:

- 22-centimeter variable support transition length
- 13 material transitions



HOW I'M DIFFERENT

I'm actually quite advanced.

Fluidity is fundamental when it comes to navigating some of the most delicate blood vessels in the body. So I'm armed with a hydrophilic coating for optimal movement without resistance.

Attributes:

- 30cm of hydrophilic coating
- Lubricious and highly durable



We're Q'Apel, a medical technology company that creates solutions. More specifically, we design novel access device technology for vascular interventions and unmet clinical needs. Because in the precious seconds that surround a stroke emergency, clinicians need technology that delivers. That's where we come in.

Get in touch | info@qapelmedical.com | [linkedin.com/company/q-apel-medical](https://www.linkedin.com/company/q-apel-medical)

©2021. Q'Apel Medical, Inc. All rights reserved. MKT 00621.B

REF

SF7072-105-22-30

Q'Apel Medical

46708 Lakeview Blvd

Fremont, CA 94538

510.738.6255

[qapelmedical.com](https://www.qapelmedical.com)